

LANVERA

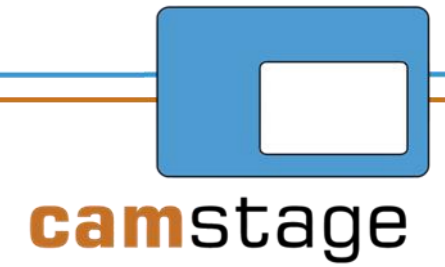
WARNING:

The patterns shown give an indication of colour. However a slight variation must be expected between dye batches, and monitors. All flame retardant materials should be kept free of dust as this may provide a fire source. Goods are offered subject to our Terms & Conditions of trading, a copy of which is available on request. We highly recommend viewing fabric samples before placing an order or manufacture.

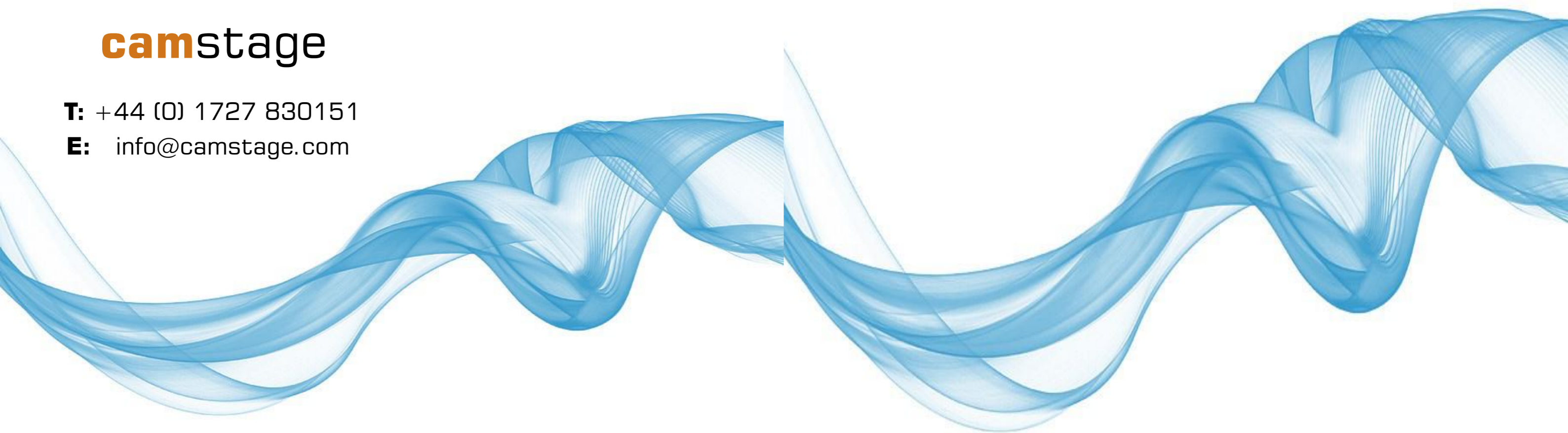
camstage

T: +44 (0) 1727 830151

E: info@camstage.com



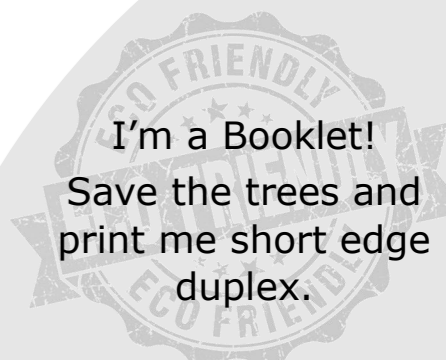
LANVERA



Bodies & Accreditations



©camstage Magazine
Published January 2018



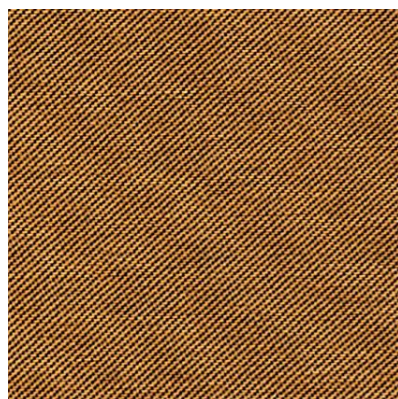
LANVERA



ADRIATIC
CAMLANVERA201



APPLE
CAMLANVERA202



APRICOT
CAMLANVERA203



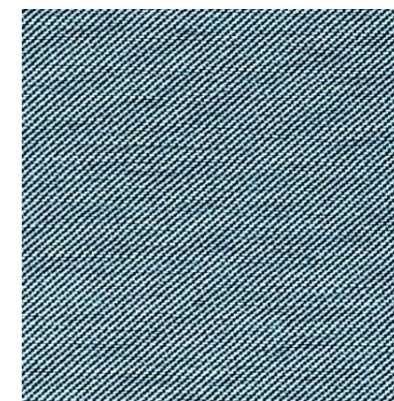
BLACK
CAMLANVERA204



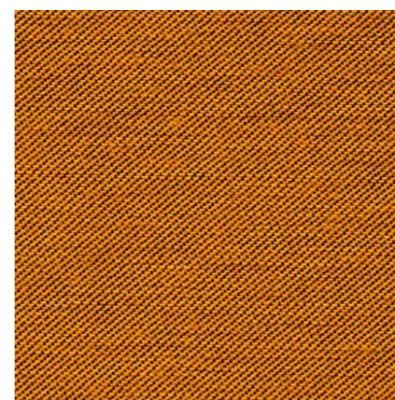
BRIGHT BLUE
CAMLANVERA205



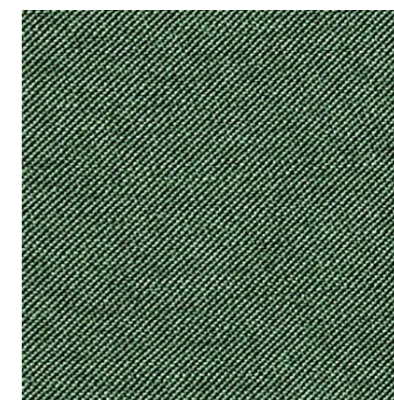
SMOG
CAMLANVERA226



SMOKE
CAMLANVERA227



SOVEREIGN
CAMLANVERA228



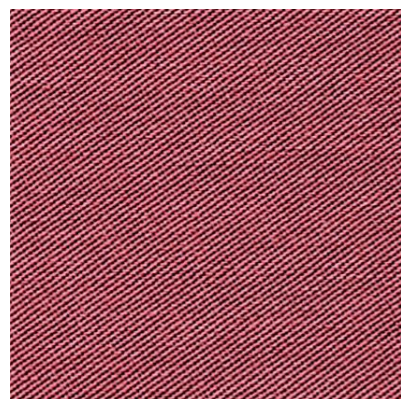
SPRING
CAMLANVERA229



TILE
CAMLANVERA230



LANVERA



PINK
CAMLANVERA221



PURPLE
CAMLANVERA222



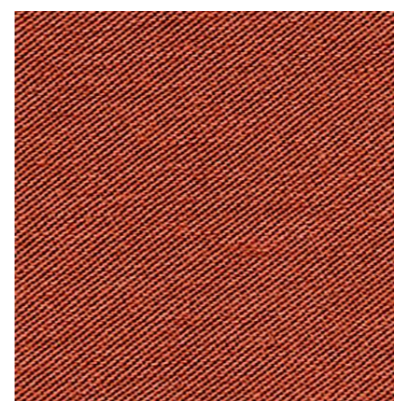
RED RUST
CAMLANVERA223



ROYAL BLUE
CAMLANVERA224



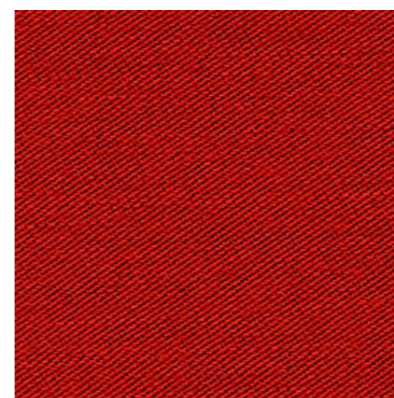
SHERWOOD
CAMLANVERA225



BURNT ORANGE
CAMLANVERA206



CAMELIA
CAMLANVERA207



CARMINE
CAMLANVERA208



COPRA
CAMLANVERA209



DARK BROWN
CAMLANVERA210

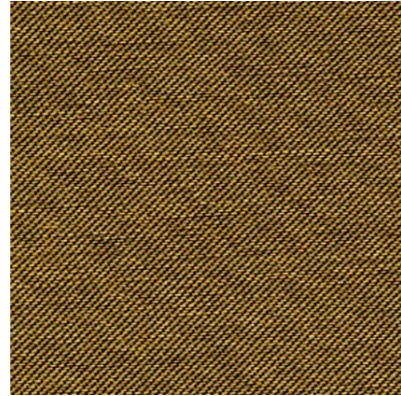


ELDERBERRY
CAMLANVERA211

LANVERA



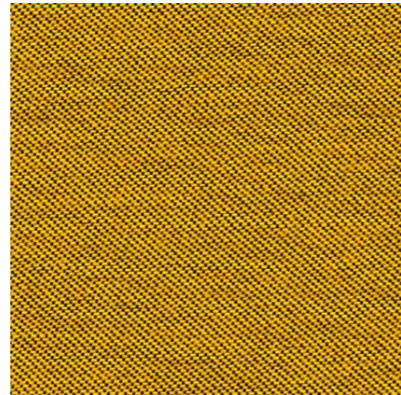
FATHOM
CAMLANVERA212



FAWN
CAMLANVERA213



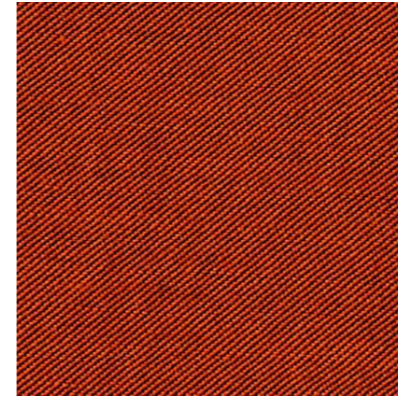
IVY
CAMLANVERA214



KINGCUP
CAMLANVERA215



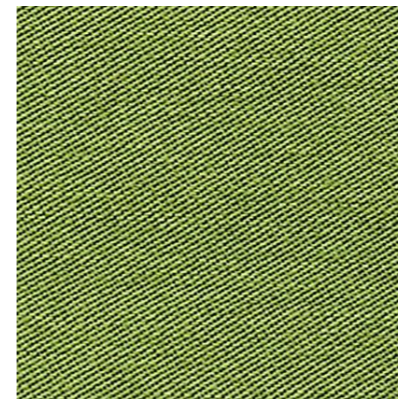
OPAL
CAMLANVERA216



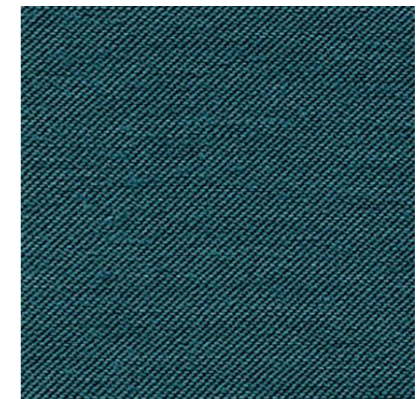
OUTSPAN
CAMLANVERA217



OXFORD BLUE
CAMLANVERA218



PASTAL
CAMLANVERA219



PETROL
CAMLANVERA220

Technical Attributes



Widths:
150cm / 60"



BS5867, EN13773



Weight:
310g/m²



IFR
65% Modacrylic
35% Polyester