

MAIN LINE PLUS

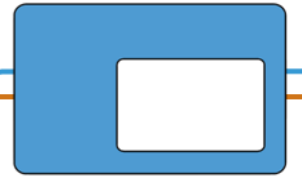
WARNING:

The patterns shown give an indication of colour. However a slight variation must be expected between dye batches, and monitors. All flame retardant materials should be kept free of dust as this may provide a fire source. Goods are offered subject to our Terms & Conditions of trading, a copy of which is available on request. We highly recommend viewing fabric samples before placing an order or manufacture.

camstage

T: +44 (0) 1727 830151

E: info@camstage.com



camstage

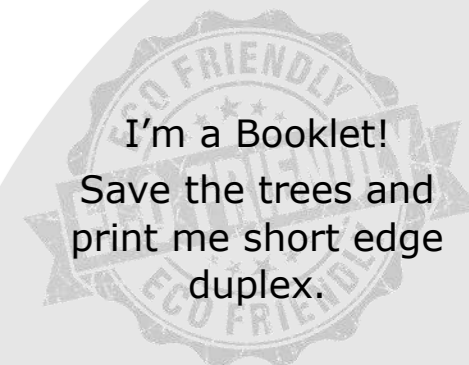
MAIN LINE PLUS

Bodies & Accreditations

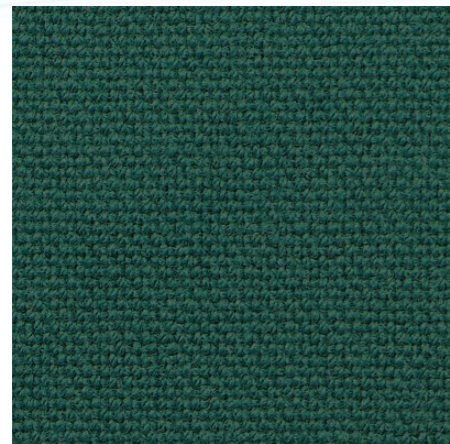


©camstage Magazine
Published January 2018

I'm a Booklet!
Save the trees and
print me short edge
duplex.



MAIN LINE PLUS



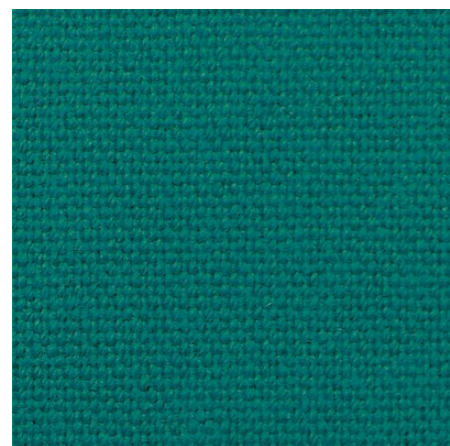
TEAL

CAMIF240



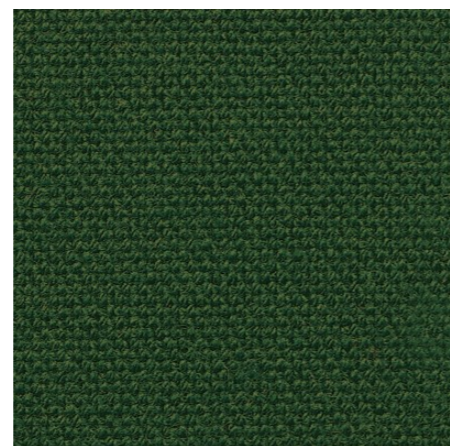
TRIDENT

CAMIF135



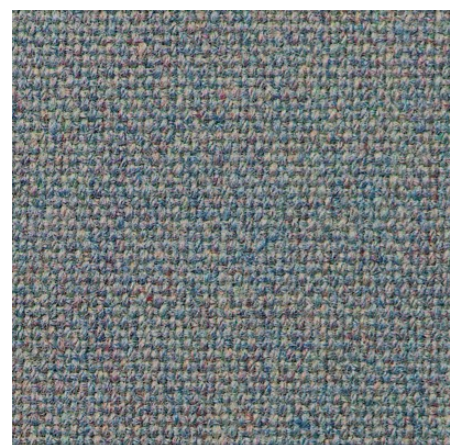
AQUAMARINE

CAMIF141



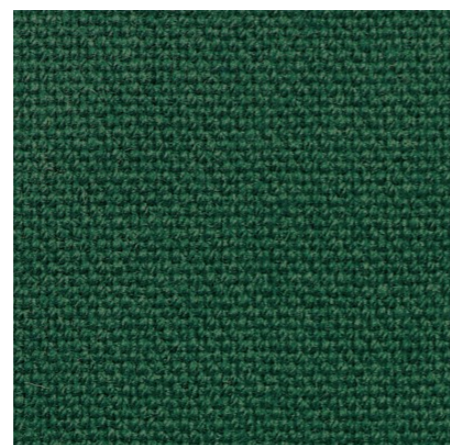
FOREST

CAMIF094



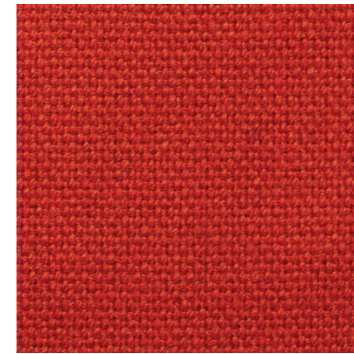
PRISM

CAMIF057



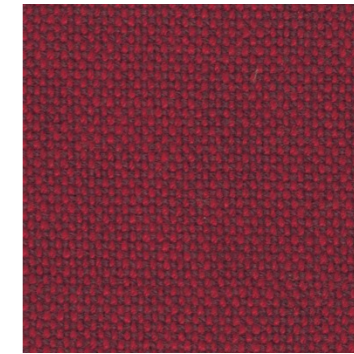
JUNIPER

CAMIF084



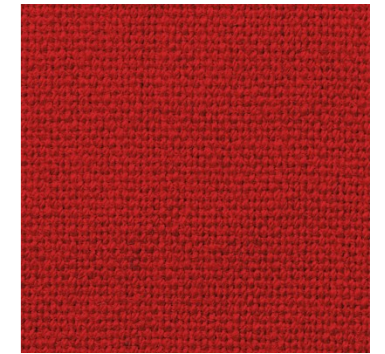
CELTIC

CAMIF120



MATADOR

CAMIF272



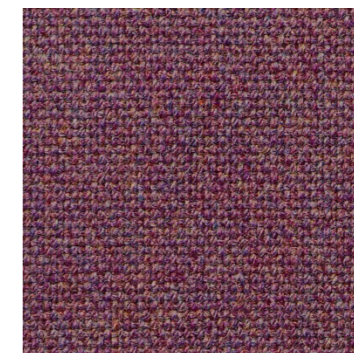
RED

CAMIF011



CRIMSON

CAMIF116



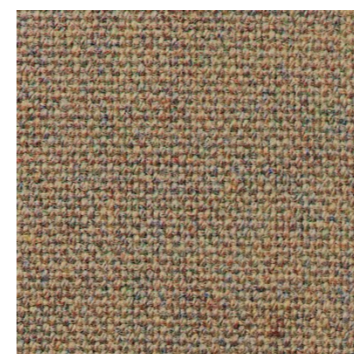
TULIP

CAMIF237



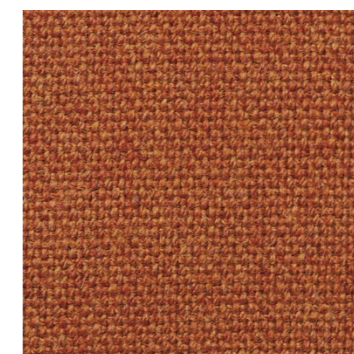
MORUM

CAMIF128



BRINDLE

CAMIF056



MARMALADE

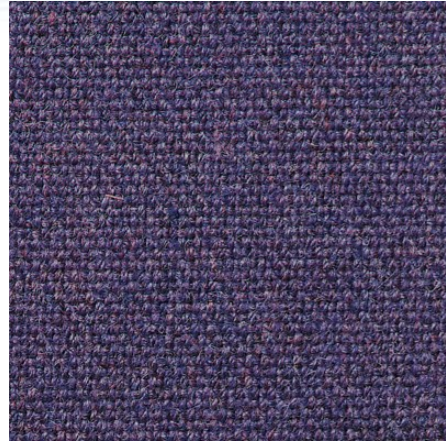
CAMIF142



TERRACOTTA

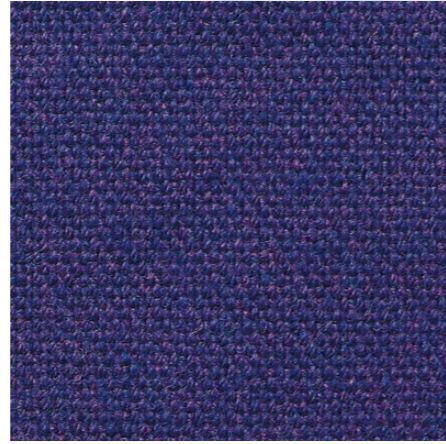
CAMIF046

MAIN LINE PLUS



PENSTEMON

CAMIF147



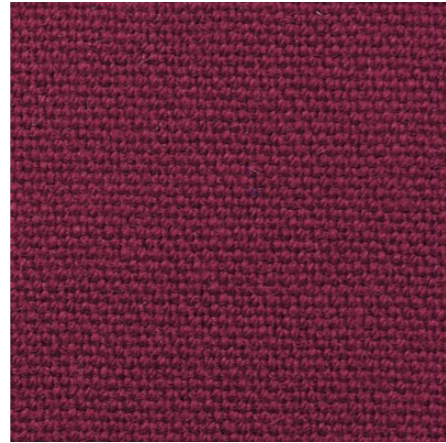
PRUDENCE

CAMIF250



BELLIS

CAMIF113



CLARET

CAMIF033



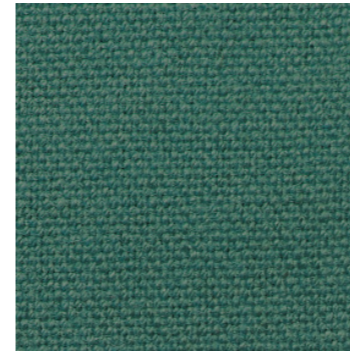
WINE

CAMIF019



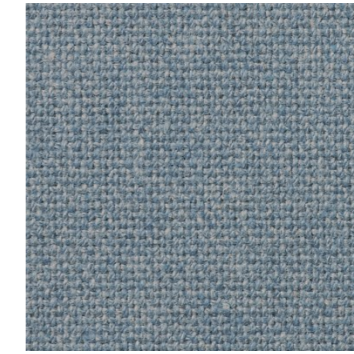
RUBY

CAMIF101



MERMAID

CAMIF231



WEDGWOOD

CAMIF027



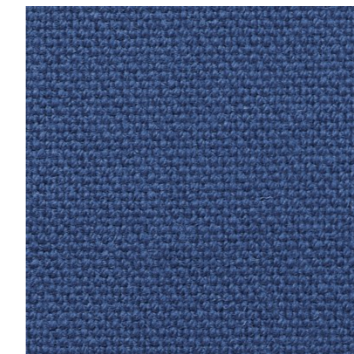
CHARCOAL

CAMIF000



BLACK

CAMIF059



CORINTH

CAMIF089



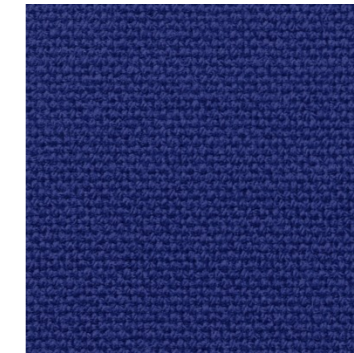
TWILIGHT

CAMIF075



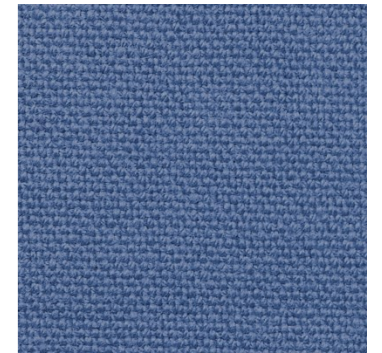
TRIUMPH

CAMIF275



INK

CAMIF129



BLUENOTE

CAMIF149

MAIN LINE PLUS



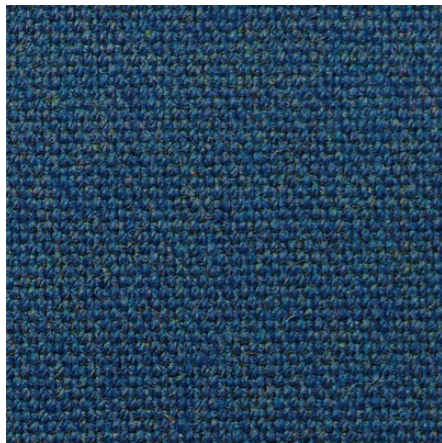
CLIPPER

CAMIF111



MAHONIA

CAMIF114



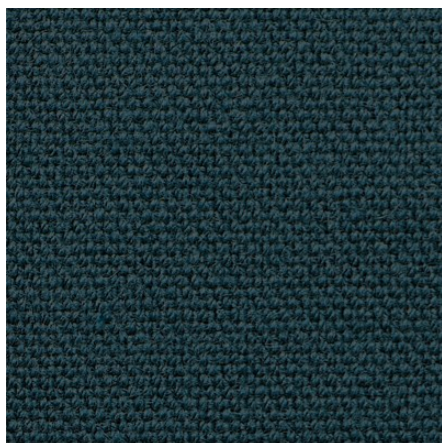
CRESSIDA

CAMIF112



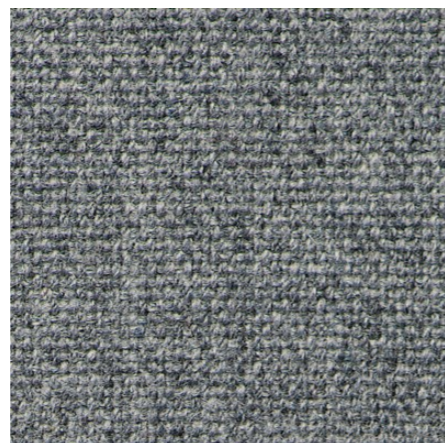
ROYAL

CAMIF020



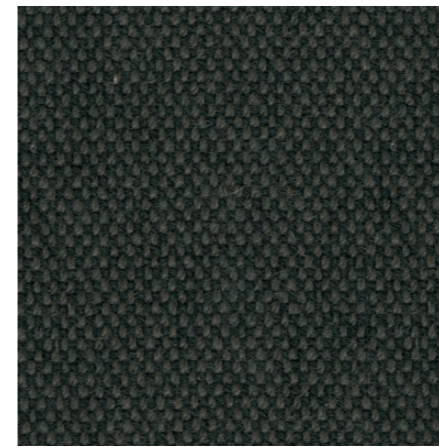
FJORD

CAMIF083



LEAD

CAMIF058



GIRDER

CAMIF276



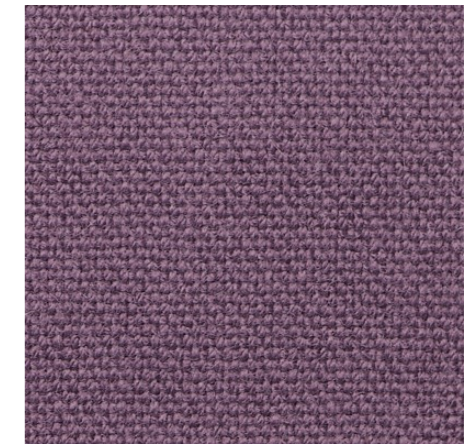
TUSCANY

CAMIF241



CARBON

CAMIF252



DEWBERRY

CAMIF148

Technical Attributes



Widths:
130cm / 51"



Weight:
425g/m²



BS5852, EN1021



FR
67% Wool
20% Flame Retardant Viscose
13% Viscose