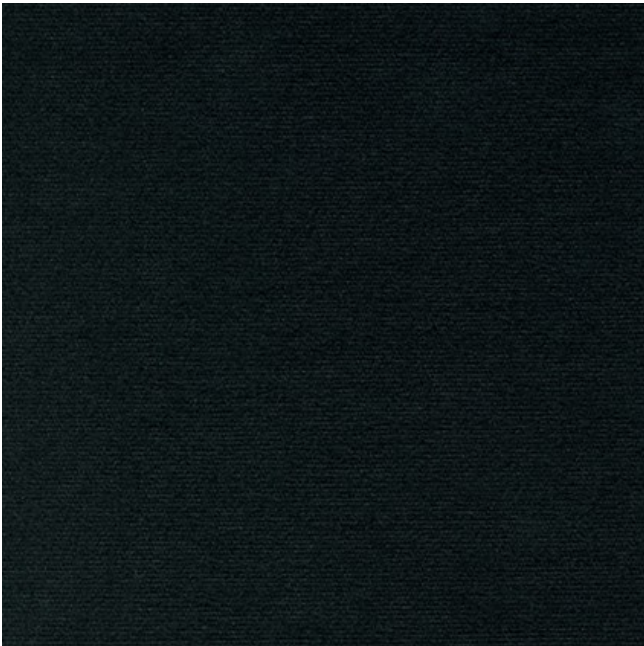


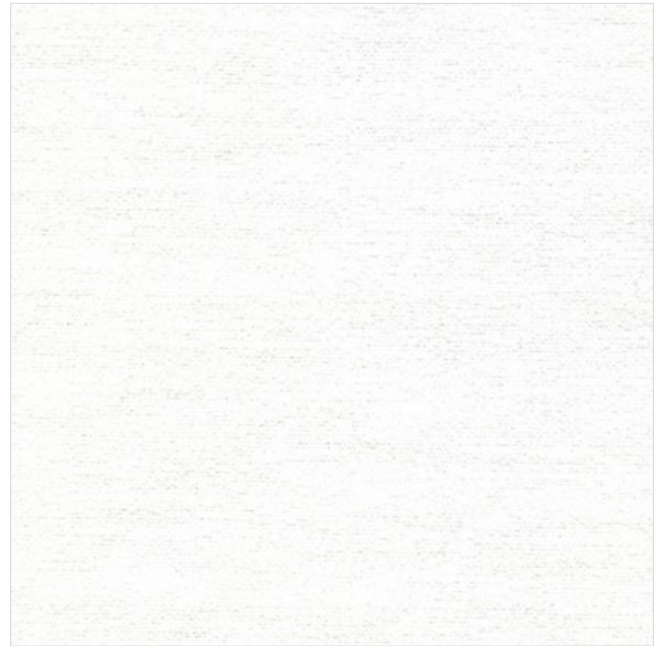
MOLTON STRETCH



BLACK

CAMMOLTON12 (300cm)

CAMMOLTON14 (325cm)



WHITE

CAMMOLTON13 (300cm)

CAMMOLTON15 (325cm)

Technical Attributes



Widths:
300cm / 118"
325cm / 128"



Weight:
270g/m²



BS5867, EN13773,
M1



NDFR
97% Cotton
3% Elastane