

RACER

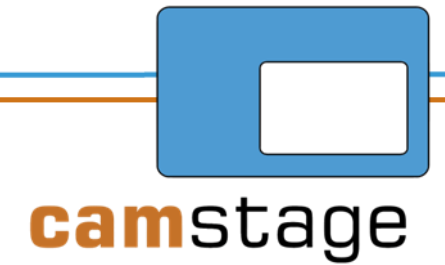
WARNING:

The patterns shown give an indication of colour. However a slight variation must be expected between dye batches, and monitors. All flame retardant materials should be kept free of dust as this may provide a fire source. Goods are offered subject to our Terms & Conditions of trading, a copy of which is available on request. We highly recommend viewing fabric samples before placing an order or manufacture.

camstage

T: +44 (0) 1727 830151

E: info@camstage.com



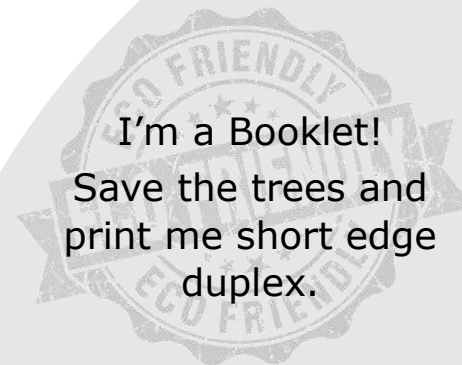
RACER

Bodies & Accreditations

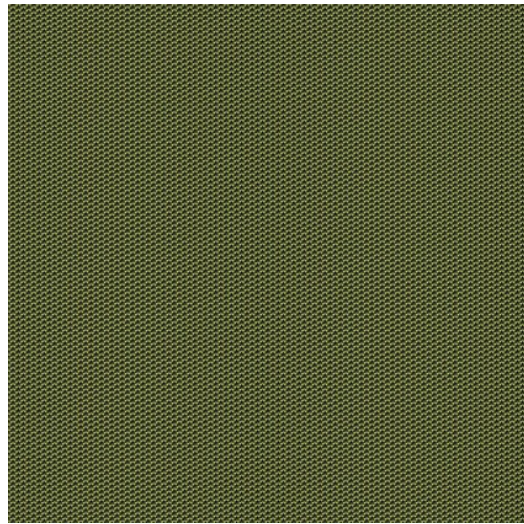


©camstage Magazine
Published January 2018

I'm a Booklet!
Save the trees and
print me short edge
duplex.

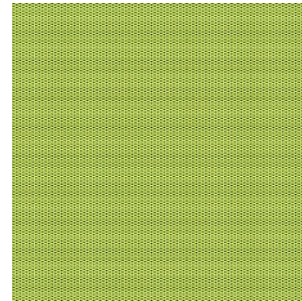


RACER



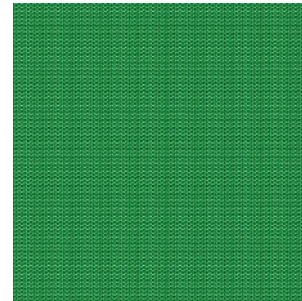
TRAIN

CAMNU027



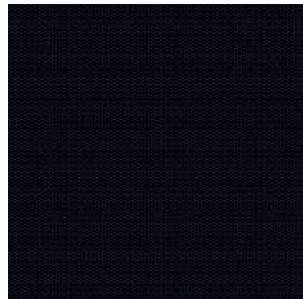
ENERGY

CAMNU026



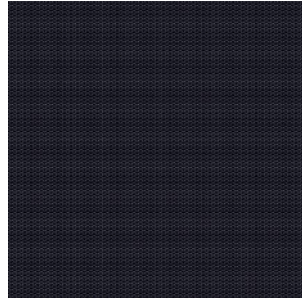
BOLT

CAMNU022



CHASE

CAMNU004



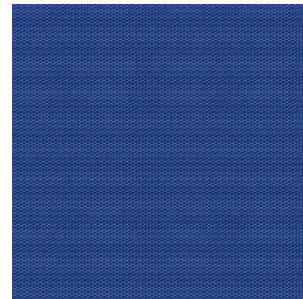
CHALLENGER

CAMNU021



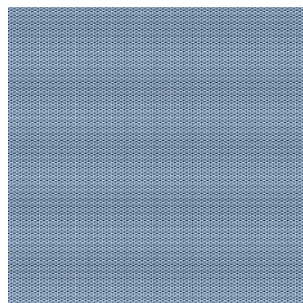
LINE

CAMNU033



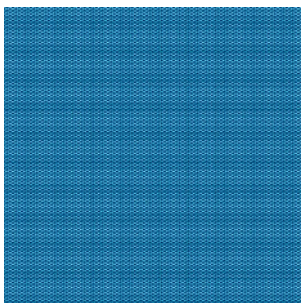
FOCUS

CAMNU037



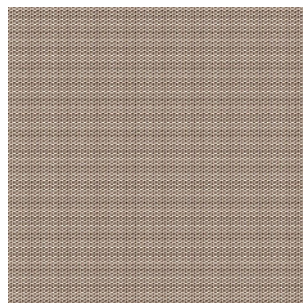
NUTRITION

CAMNU039



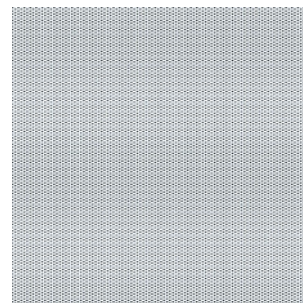
VICTORY

CAMNU032



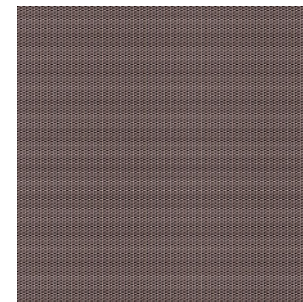
GAIN

CAMNU046



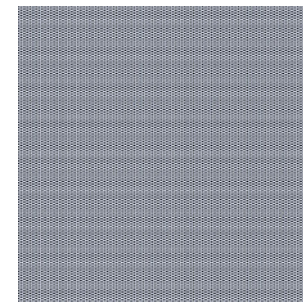
MEDAL

CAMNU045



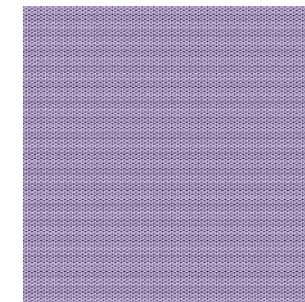
BATON

CAMNU003



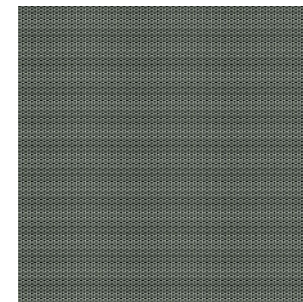
SILVER

CAMNU028



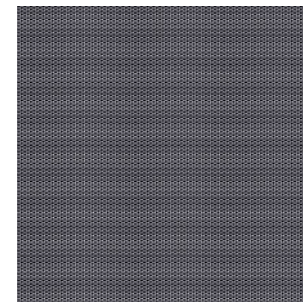
RIBBON

CAMNU047



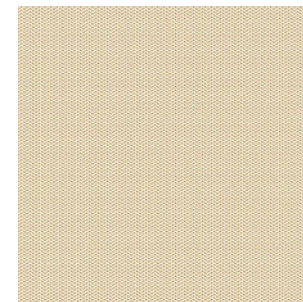
STRIDE

CAMNU023



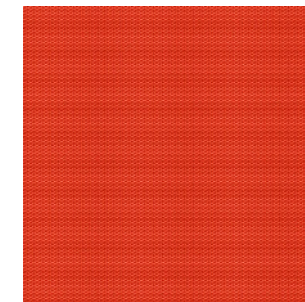
BLOCK

CAMNU029



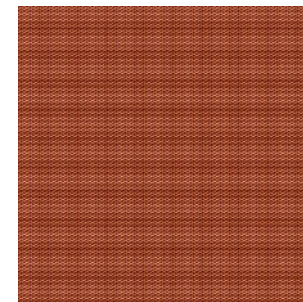
PACE

CAMNU005



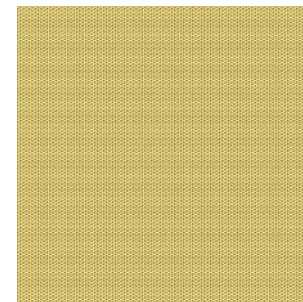
PLUNGE

CAMNU016



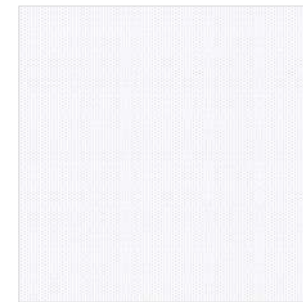
TRACK

CAMNU007



DASH

CAMNU048



DART

CAMNU044

Technical Attributes



Widths:
170cm / 66"



Weight:
300g/m²



BS476, EN13501-1



SBI ADHERED
100% Polyester